

FOR LEASE

Pleasant Grove Town Center

931 West State Street • Pleasant Grove, UT



Property Information:

- 1,100 - 1,300 SF available
- 3,000 - 7,600 sf END CAP
- Located on busy intersection of Pleasant Grove Blvd & State Street
- Traffic Count - 31,000 ADT

Demographics

Population	1 Mile	3 Mile	5 Mile
2019 Estimated	17,751	73,811	155,179
2024 Projected	20,131	82,261	172,556

Households	1 Mile	3 Mile	5 Mile
2019 Estimated	5,812	20,652	42,115
2024 Projected	6,588	23,024	46,841

Income	1 Mile	3 Mile	5 Mile
2019 Est. Avg HH	\$58,263	\$84,247	\$92,831
2019 Est Med HH	\$51,390	\$70,399	\$77,124

Cotenants Include:



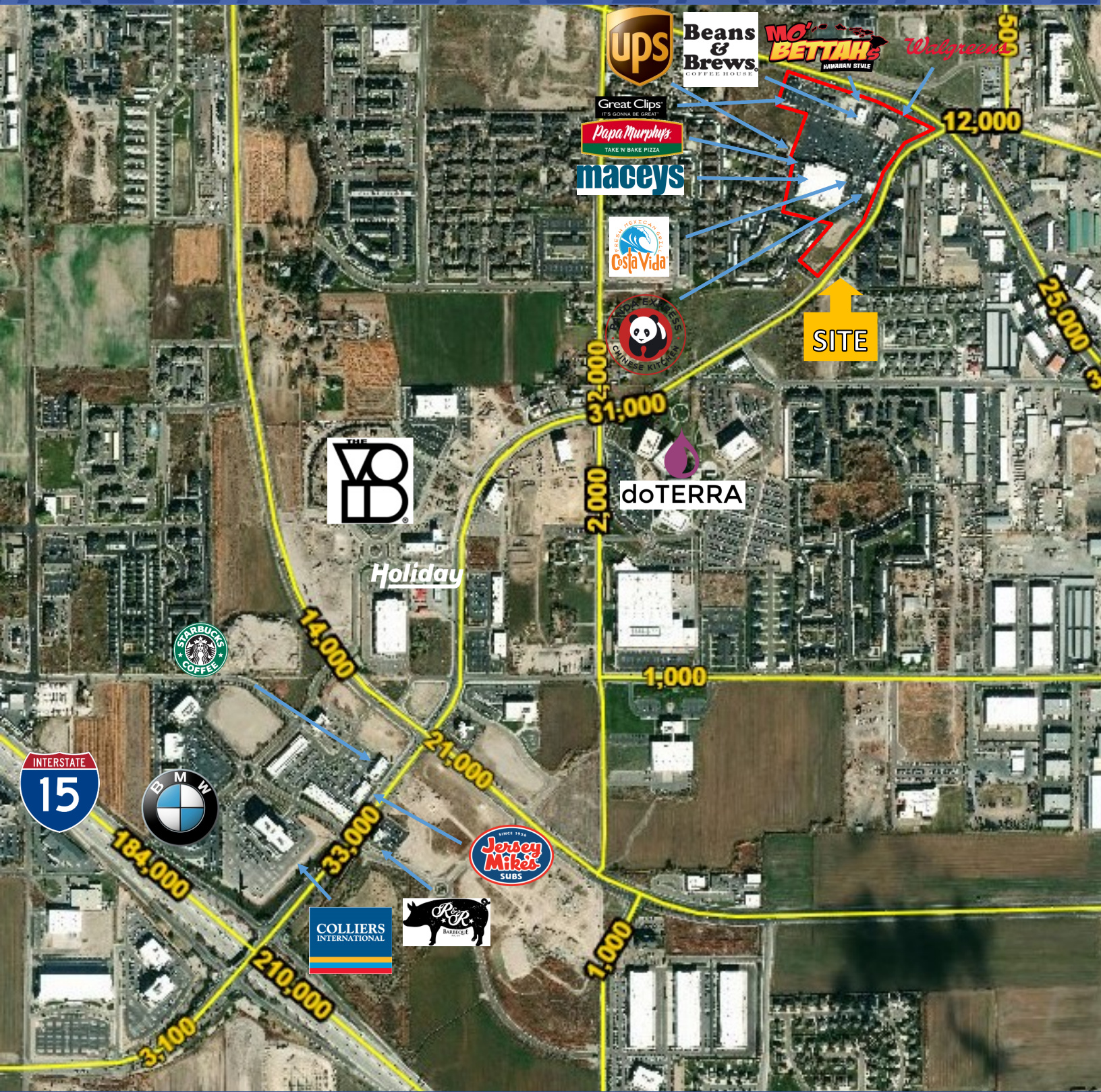
Lisa Vandersteen
 lisav@amsource.com
 801.741.4530



FOR LEASE

Pleasant Grove Town Center

931 West State Street • Pleasant Grove, UT



Lisa Vandersteen
lisav@amsource.com
801.741.4530

