

FOR LEASE

Sugarhouse Retail/Office

1441 E 2100 S. Salt Lake City, Utah



Property Information:

- Starting rent \$20.00 psf.
- 2,496 available
- TIA available based on tenant financials and final rent.
- Across the street from Sugarhouse Park
- Very walkable location

Demographics

	1 Mile	3 Miles	5 Miles
Population	21,770	153,656	323,683
Households	9,457	64,999	130,515
Est, Businesses	9,904	67,430	139,515
Daytime Pop	13,116	166,392	377,583

Income

Med HH Income	\$62,112	\$55,343	\$55,228
---------------	----------	----------	----------

Lisa Vandersteen

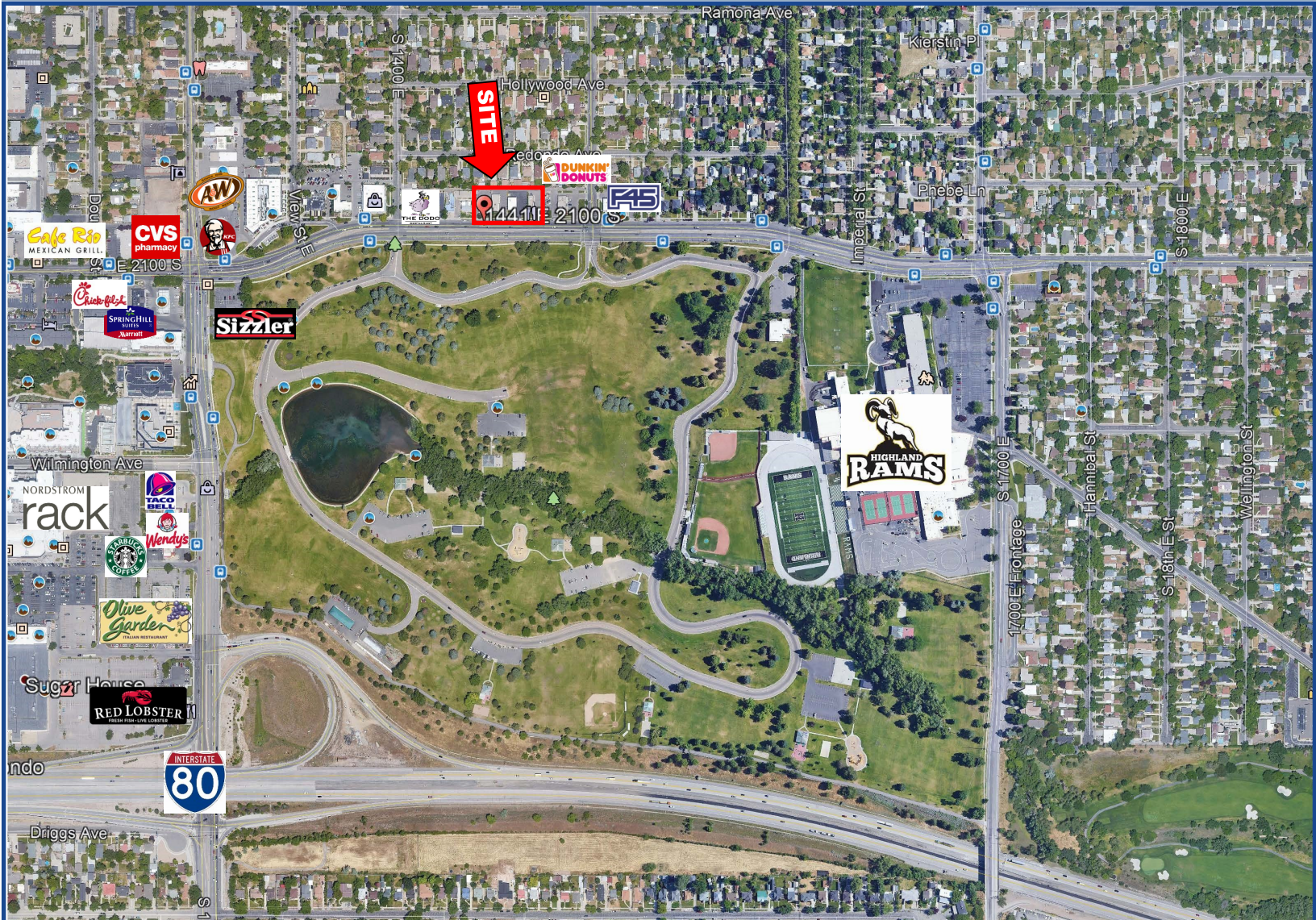
lisav@amsource.com

801.741.4530



FOR LEASE

Sugarhouse Retail/Office 1441 East 2100 South ' Salt Lake City



2,496 square foot office building in the heart of one of Utah's oldest neighborhoods - Sugar House. Located just minutes from I-80. Walkable to many amenities including food, retail and office. Ample parking in the rear with a second access.

Lisa Vandersteen
lisav@amsource.com
801.741.4530

