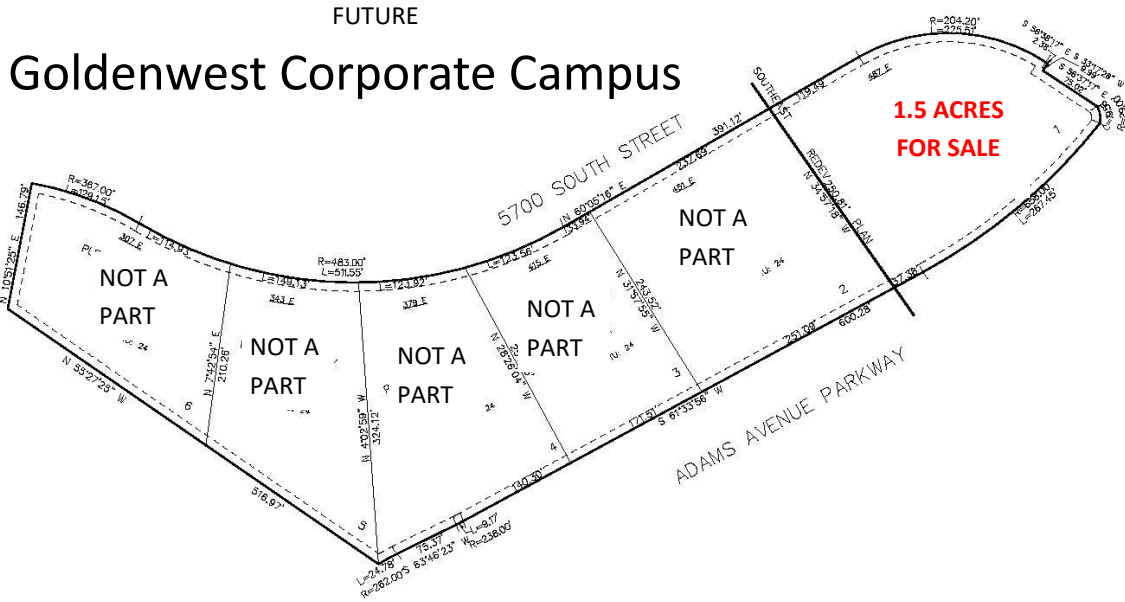


FOR SALE Pleasant Valley Medical Plaza



5700 S. Adams Pkwy, Washington Terrace, UT

Property Information:

- For sale 1.5 acre pad
- Located next to Goldenwest's future corporate campus
- .25 mile from Ogden Regional Hopspital
- Excellent access to I-84 & Highway 89
- Finished Lot

Demographics

Population	1 Mile	3 Mile	5 Mile
2021 Estimated	8,202	59,371	184,908
2026 Projected	8,812	63,936	198,460
Households	1 Mile	3 Mile	5 Mile
2021 Estimated	3,117	21,118	64,786
2026 Projected	3,229	21,937	67,934
Income	1 Mile	3 Mile	5 Mile
2021 Est. Avg HH	\$99,971	\$94,566	\$84,516
2021 Est Med HH	\$81,623	\$77,161	\$71,425

Lisa Vandersteen

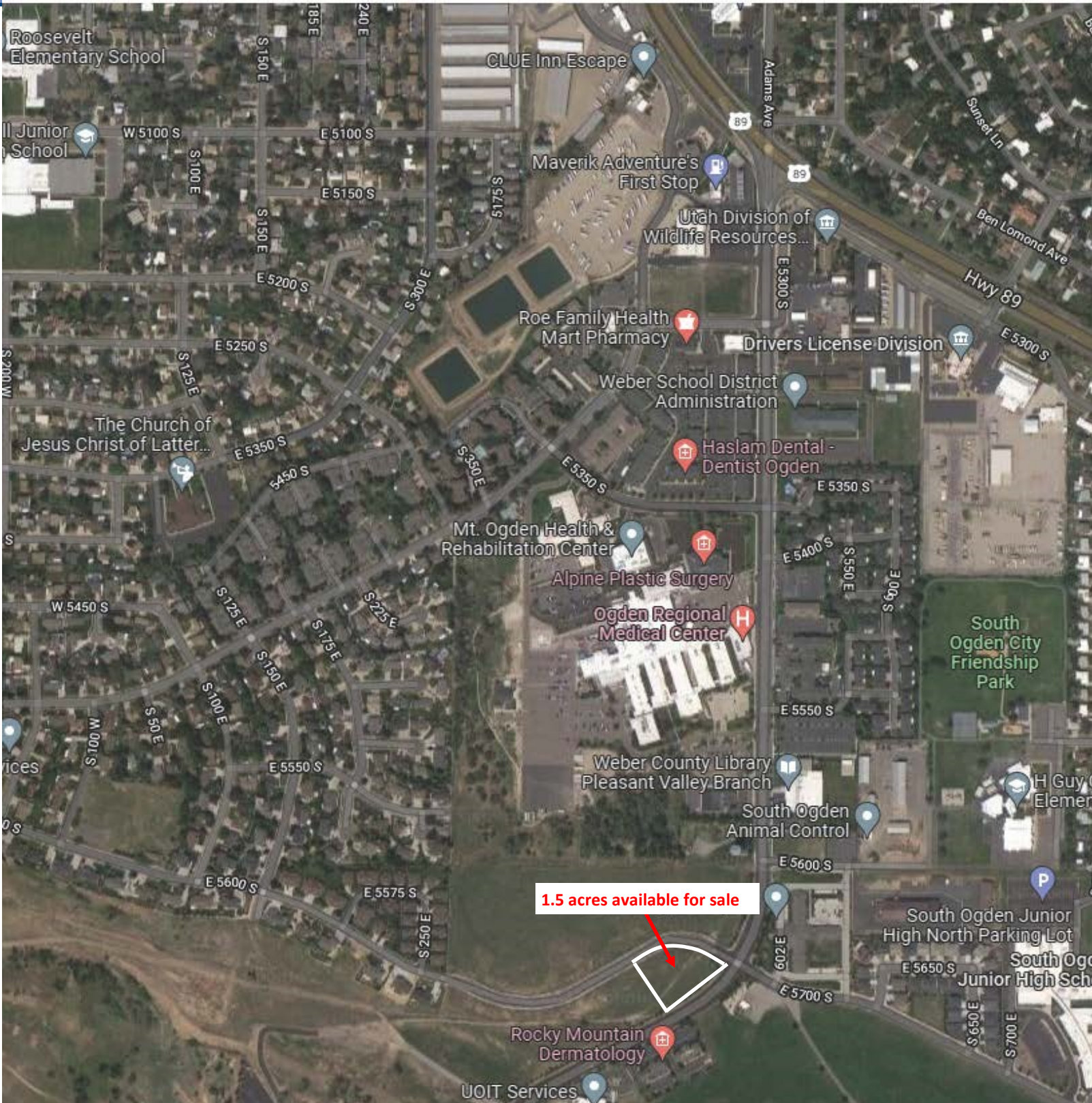
lisav@amsource.com

801.741.4530



FOR SALE

Pleasant Valley Medical Plaza



1.5 acres available for sale

Lisa Vandersteen
lisav@amsource.com
801.741.4530

